

BULOVA GROOVE

Nanakrom

"Contemporary, Elegant Townhouses "



BLACKSTONE
PROJECTS & DEVELOPMENTS LTD.

CA+D
Carpenau Architects +
Designers



5.68787° N, 0.12097° W

BULOVA GROOVE

**BOTWE SCHOOL
JUNCTION**

GREAT LOCATION

Located 1.5 kilometers from Ashaley Botwe School Junction. This Development is surrounded by Similar residences in a quiet serene Neighbourhood.




MORE !

These exquisite detached 3-bedroom and 2 bedroom residences provide not only a secure sanctuary but also an array of superb amenities, ensuring that every moment spent within the confines of your home evokes a sense of sheer paradise.



24 /7 security



Pool and Play




Proximity to Shops



Electricity Water



Refuse Collection



Back Up Power

BLOCK LAYOUT



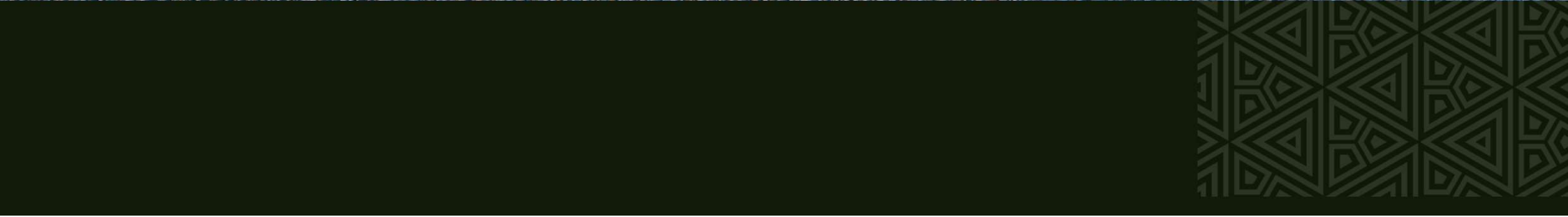
HOUSE TYPE 1 - 3 BED-ROOMS, 1 MAID'S ROOM, 2 CAR PARKING SPACE, BACKYARD

HOUSE TYPE 2 - 2 BED-ROOMS, 2 CAR PARKING SPACE, BACKYARD



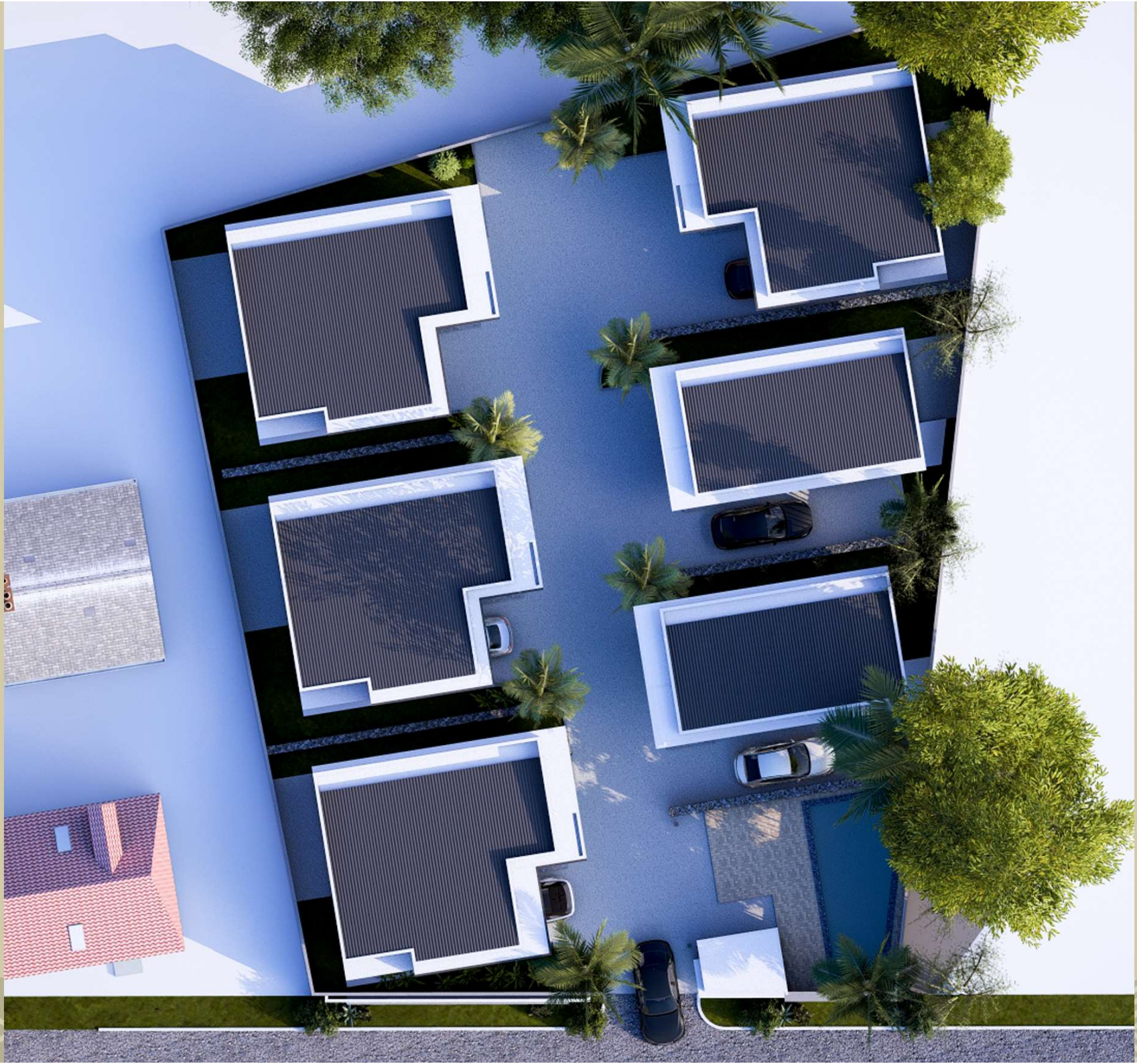


BULOVA GROVE





BULOVA GROVE





BULOVA GROVE



HOUSE TYPE 1



HOUSE TYPE 1

HOUSE TYPE 1

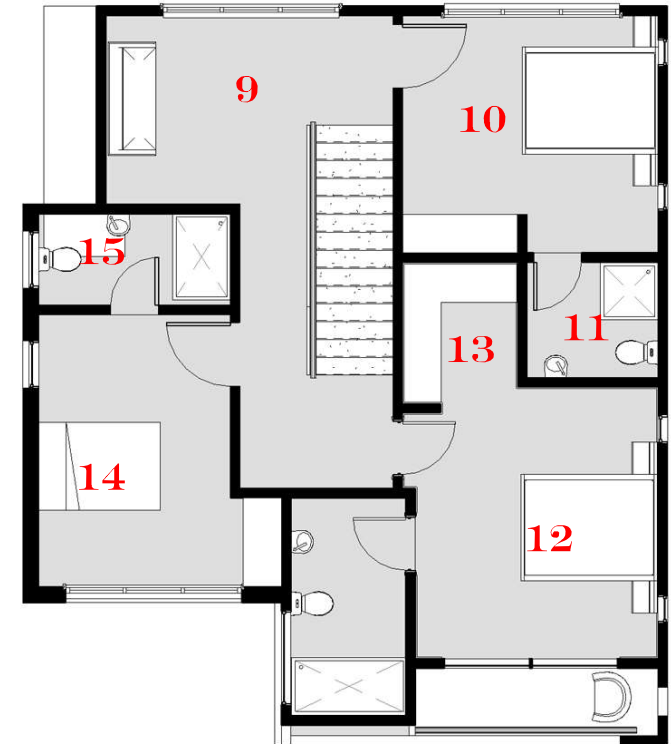
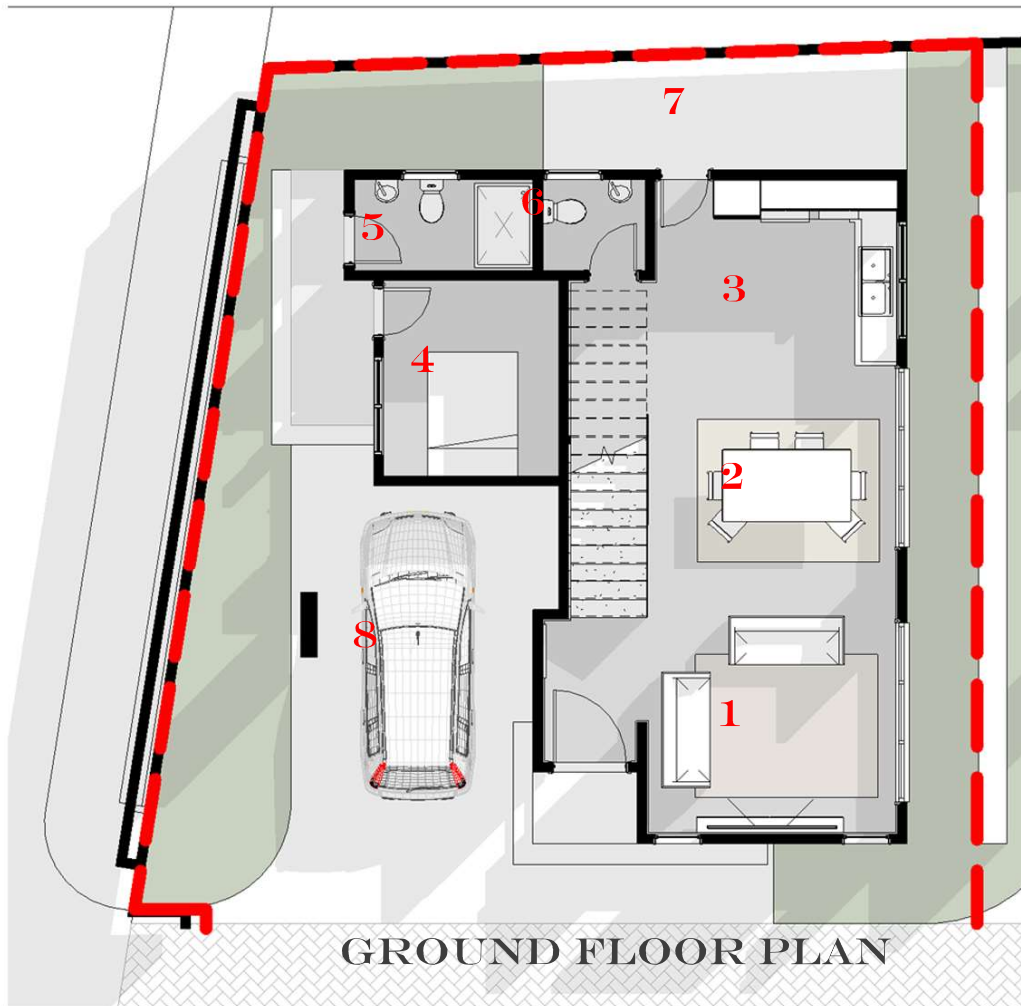


HOUSE TYPE 2



HOUSE TYPE 1

HOUSE TYPE 1



- | | | |
|-----------------------|--------------------------|--------------------------|
| 1 LIVING AREA | 6 VISITORS' WC | 11 WC / SHO. |
| 2 DINING | 7 OUTDOOR TERRACE | 12 MASTER BEDROOM |
| 3 OPEN KITCHEN | 8 CAR PORT | 13 WC / SHO |
| 4 MAID'S ROOM | 9 FAMILY AREA | 14 BEDROOM 2 |
| 5 WC/ SHO. | 10 BEDROOM 1 | 15 WC / SHO. |





HOUSE TYPE 2

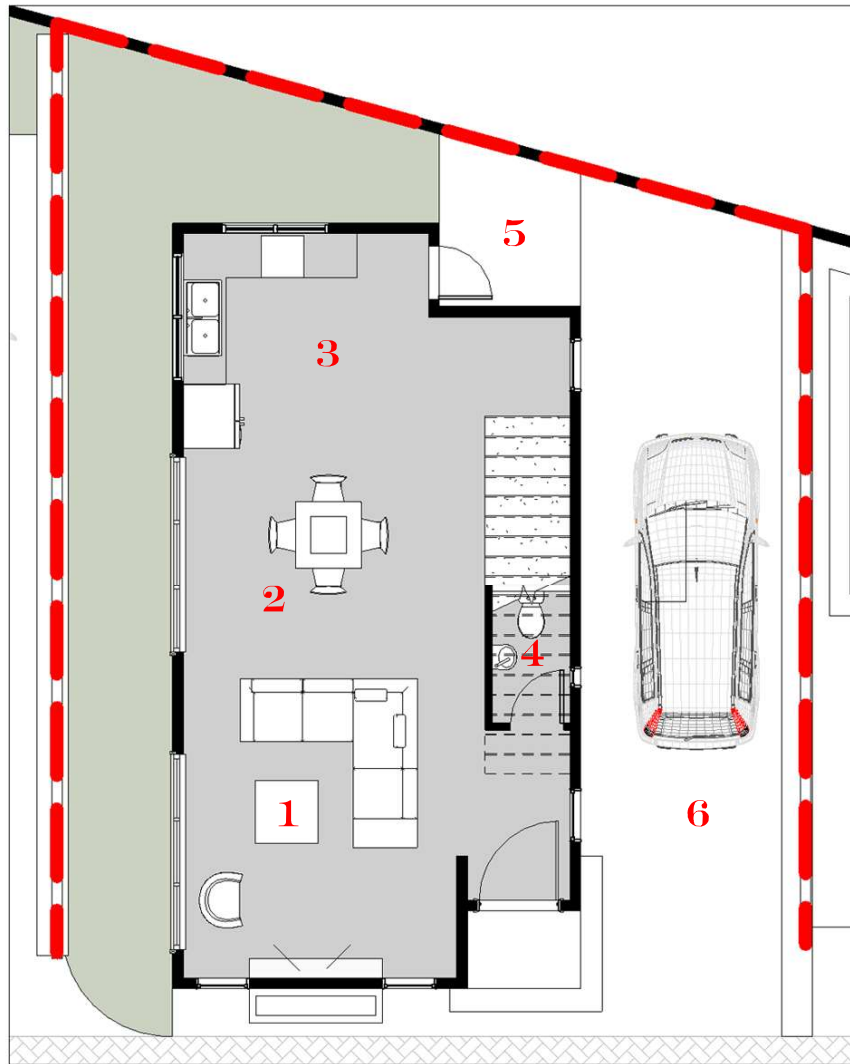


HOUSE TYPE 2



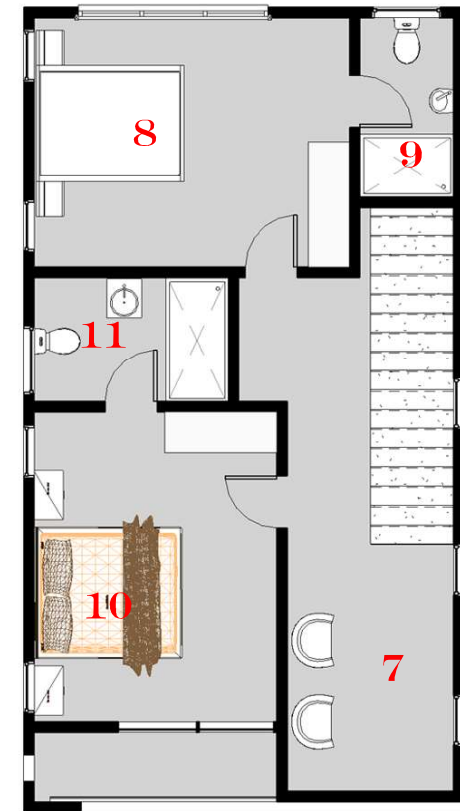
HOUSE TYPE 2

HOUSE TYPE 2



GROUND FLOOR PLAN

- | | | | |
|----------|---------------------|----------|--------------------|
| 1 | LIVING AREA | 5 | TERRACE |
| 2 | DINING | 6 | CAR PORT |
| 3 | OPEN KITCHEN | 7 | FAMILY AREA |
| 4 | VISITORS' WC | 8 | BEDROOM 1 |



FIRST FLOOR PLAN

- | | |
|-----------|-----------------------|
| 9 | WC / SHO. |
| 10 | MASTER BEDROOM |
| 11 | WC / SHO. |

















BLACKSTONE

PROJECTS & DEVELOPMENTS LTD.

For more Information, Call us on - +233 26 428 7807 or visit us on
<https://blackstone-gh.com/>